



MARS

GSP7G78M-600W

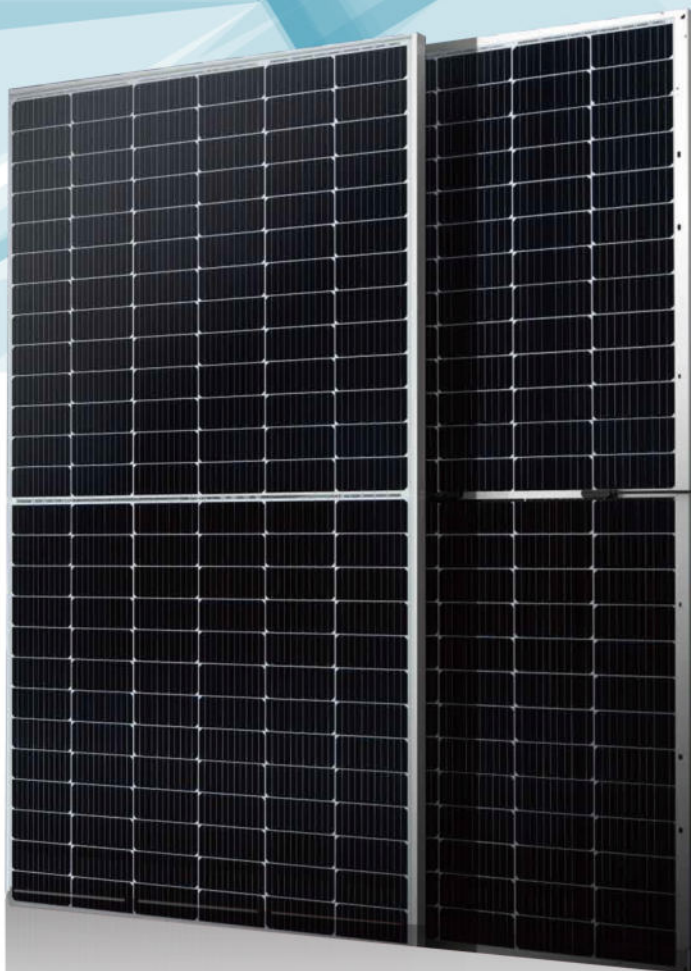
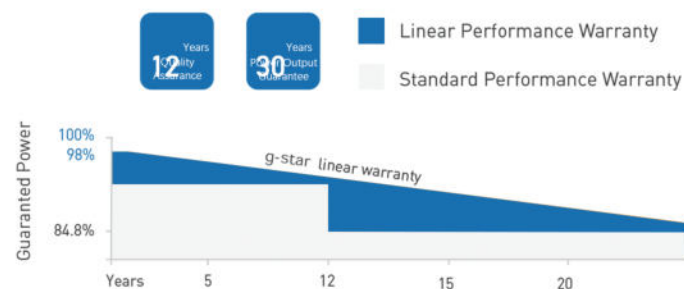
Bifacial
10BB Half-cut Mono Perc

SYSTEM & PRODUCT CERTIFICATES

- IEC 61215 / IEC 61730 / UL 61730
- ISO 9001: 2015 Quality Management System
- ISO 14001: 2015 Environment Management System
- ISO 45001: 2018 Occupational Health and Safety Management Systems



PERFORMANCE WARRANTY



KEY FEATURES



10BB Half-cut Cell Technology

New circuit design, lower internal current, lower R_s loss
Ga doped wafer, attenuation $< 2\%$ (1st year) / $\leq 0.45\%$ (Linear)



Industry Leading High Yield

Bifacial PERC cell technology,
5%-25% more yield depends on different conditions



Excellent Anti-PID Performance

2 times of industry standard Anti-PID test



Wider Application

No water-permeability and high wear-resistance,
can be widely used in high-humid, windy and dusty area



IP68 Junction Box

High waterproof level

Electrical Characteristics

| Testing Condition | STC | NMOT | STC | NMOT | STC | NMOT | STC | NMOT | STC | NMOT |
|-------------------------------|-------|-------|-------|-------|-------|-------|-------|-------|-------|-------|
| Maximum Power(Pmax/W) | 580 | 432 | 585 | 436 | 590 | 439 | 595 | 443 | 600 | 447 |
| Operating Voltage (Vmpp/V) | 44.97 | 41.9 | 45.11 | 42.1 | 45.25 | 42.2 | 45.39 | 42.3 | 45.53 | 42.5 |
| Operating Current (Impp/A) | 12.90 | 10.30 | 12.97 | 10.35 | 13.04 | 10.41 | 13.11 | 10.46 | 13.18 | 10.52 |
| Open-Circuit Voltage (Voc/V) | 53.59 | 50.4 | 53.73 | 50.6 | 53.87 | 50.7 | 54.01 | 50.8 | 54.15 | 51.0 |
| Short-Circuit Current (Isc/A) | 13.79 | 11.12 | 13.86 | 11.17 | 13.93 | 11.23 | 14.00 | 11.28 | 14.07 | 11.34 |
| Module Efficiency[%] | 20.70 | | 20.90 | | 21.10 | | 21.30 | | 21.50 | |

Mechanical Characteristucs

| | | | | | |
|-----------|-------|-------|-------|-------|-------|
| Pmax gain | 5% | 10% | 15% | 20% | 25% |
| Pmax/W | 620 | 649 | 679 | 708 | 725 |
| Vmpp/V | 45.25 | 45.25 | 45.25 | 45.25 | 45.25 |
| Impp/A | 13.69 | 14.34 | 15.00 | 15.65 | 16.30 |
| VocV | 53.87 | 53.87 | 53.87 | 53.87 | 53.87 |
| Isc/A | 14.63 | 16.02 | 16.02 | 16.72 | 17.41 |

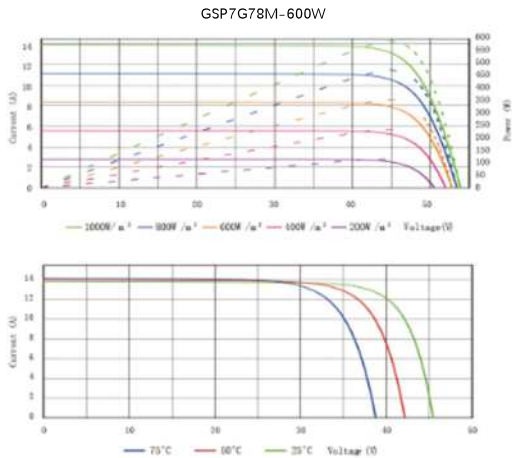
Mechanical Characteristucs

| | |
|---|-------------|
| Temperature Coefficient of Pmax | -0.35%/° C |
| Temperature Coefficient of Voc | -0.26%/° C |
| Temperature Coefficient of Isc | +0.048%/° C |
| Nominal Module OperatingTemperature(NMOT] | 43±2° C |

Application Conditions

| | |
|-------------------|---|
| Cell Type | Monocrystalline |
| No. of Cells | 156pcs in series (6*26) |
| Module Dimensions | 2465*1134*35mm (97.05*44.65*1.38inches) |
| Weight | 31.5kg(69.45lbs.) |
| Glass | 3.2mm AR Coating Tempered Glass |
| Frame | Anodized Aluminium Alloy |
| Junction Box | IP68, 3 Bypass Diodes |
| Output Cables | 4mm ² (IEC), 12AWG(UL)300mm in Length or Customized Length |
| Connectors | MC4/MC4-EV02 |

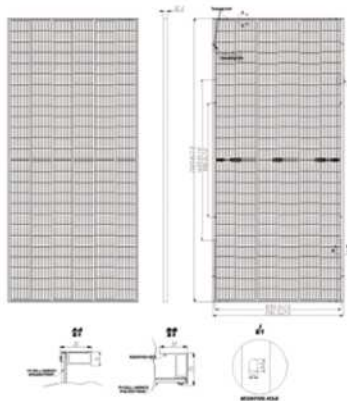
I-V Curve



Temperature Characteristics

| | |
|---------------------------|------------------------------------|
| Maximun System Voltage | 1500V/DC |
| Operating Temperature | -40° C+85° |
| Maximun Series Fuse | 30A |
| Safety Protection Class | ClassII |
| Mechanical Load | Front side 5400Pa Back side 2400Pa |
| Refer. Bifaciality Factor | 70%±5% |

Technical Drawings



The specification and key features described in this datasheet may deviate slightly and are not guaranteed. Due to ongoing innovation, R&D enhancement, AG. reserves the right to make any adjustment to the information described herein at any time without notice. Please always obtain the most recent version of the datasheet which shall be duly incorporated into the binding contract made by the parties governing all transactions related to the purchase and sale of the products described herein.