



GSN7S54T-430

MONO-FACIAL MODULE
N-Type

KEY FEATURES



SMBB Technology

Better light trapping and current collection to improve module power output and reliability.



PID Resistance

Excellent Anti-PID performance guarantee via optimized mass-production process and materials control.



Higher Power Output

Module power increases 5-25% generally, bringing significantly lower LCOE and higher IRR.



Hot 2.0 Technology

The N-type module with Hot 2.0 technology has better reliability and lower LID/LETID.



Enhanced Mechanical Load

Certified to withstand: wind load (2400 Pascal) and snowload (5400 Pascal).



LINEAR PERFORMANCE WARRANTY



IEC61215(2016) IEC61730(2016)

ISO9001:2015:

Quality Management System

ISO14001:2015:

Environment Management System

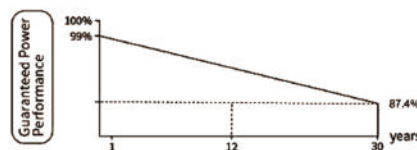
ISO45001:2018

Occupational health and safety management systems

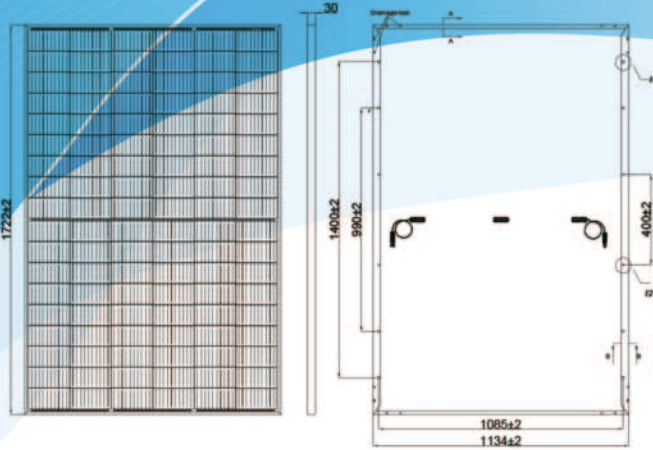
12 Year Product Warranty

30 Year Linear Power Warranty

0.40% Annual Degradation Over 30 years



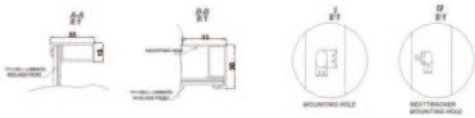
KEY FEATURES



Front

Side

Back



*This tolerance range applies only to the four-angle distance of the module as indicated above.

Packaging Configuration

(Two pallets = One stack)
36pcs/pallets,72pcs/stack,936pcs/ 40'HQ Container

SPECIFICATIONS

Module Type	GSN7S54T-410		GSN7S54T-415		GSN7S54T-420		GSN7S54T-425		GSN7S54T-430	
	STC	NOCT	STC	NOCT	STC	NOCT	STC	NOCT	STC	NOCT
Maximum Power(Pmax)	410Wp	308Wp	415Wp	312Wp	420Wp	316Wp	425Wp	320Wp	430Wp	323Wp
Maximum Power Voltage (Vmp)	31.13V	29.06V	31.32V	29.21V	31.51V	29.34V	31.70V	29.50V	31.88V	29.63V
Maximum Power Current (Imp)	13.17A	10.61A	13.25A	10.68A	13.33A	10.76A	13.41A	10.83A	13.49A	10.91A
Open-circuit Voltage (Voc)	37.73V	35.84V	37.92V	36.02V	38.11V	36.20V	38.30V	36.38V	38.49V	36.56V
Short-circuit Current (Isc)	13.91A	11.23A	13.99A	11.29A	14.07A	11.36A	14.15A	11.42A	14.23A	11.49A
Module Efficiency STC (%)	21.00%		21.25%		21.51%		21.76%		22.02%	
Operating Temperature(C)	-40°C~+85°C									
Maximum system voltage	1000/1500VDC(IEC)									
Maximum series fuse rating	25A									
Power tolerance	0~+3%									
Temperature coefficients of Pmax	-0.30%/°C									
Temperature coefficients of Voc	-0.25%/°C									
Temperature coefficients of Isc	0.046%/°C									
Nominal operating cell temperature (NOCT)	45±2°C									

*STC: ☀ Irradiance 1000W/m



Cell Temperature 25C



AM=1.5

NOCT: ☀ Irradiance 800W/m 2



Ambient Temperature 20°C



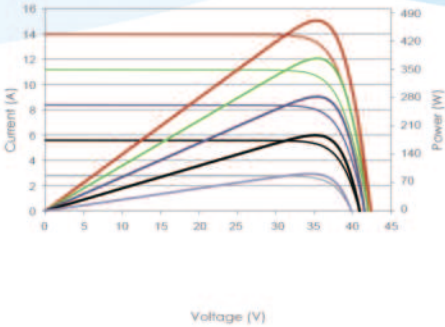
AM=1.5



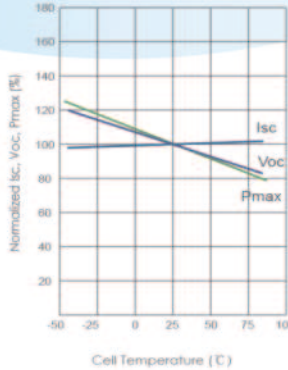
Wind Speed 1m/s

Electrical Performance & Temperature Dependence

Current-Voltage & Power-Voltage Curves (430W)



Temperature Dependence of Isc, Voc, Pmax



Mechanical Characteristics

Cell Type	N type Mono-crystalline
No. of cells	106 (6 X 18)
Dimensions	1722X1134X30mm(67.79X44.65X1.18inch)
Weight	22 kg (48.50 lbs)
Front Glass	3.2mm,Anti-Reflection CoatingHigh Transmission, Low Iron, Tempered Glass
Frame	Anodized Aluminium Alloy
Junction Box	IP68 Rated
Output Cables	300mm in legth or Customized Length

The specification and key features described in this datasheet may deviates lightly and are not guaranteed. Due to ongoing innovation, R&D enhancement, AG reserves the right to make any adjustment to the information described herein at anytime without notice. Please always obtain the most recent version of the datasheet which shall be duly incorporated into the binding contract made by the parties governing all transactions related to the purchase and sale of the products described herein.