



# MARS

## GSP7G66M-505W

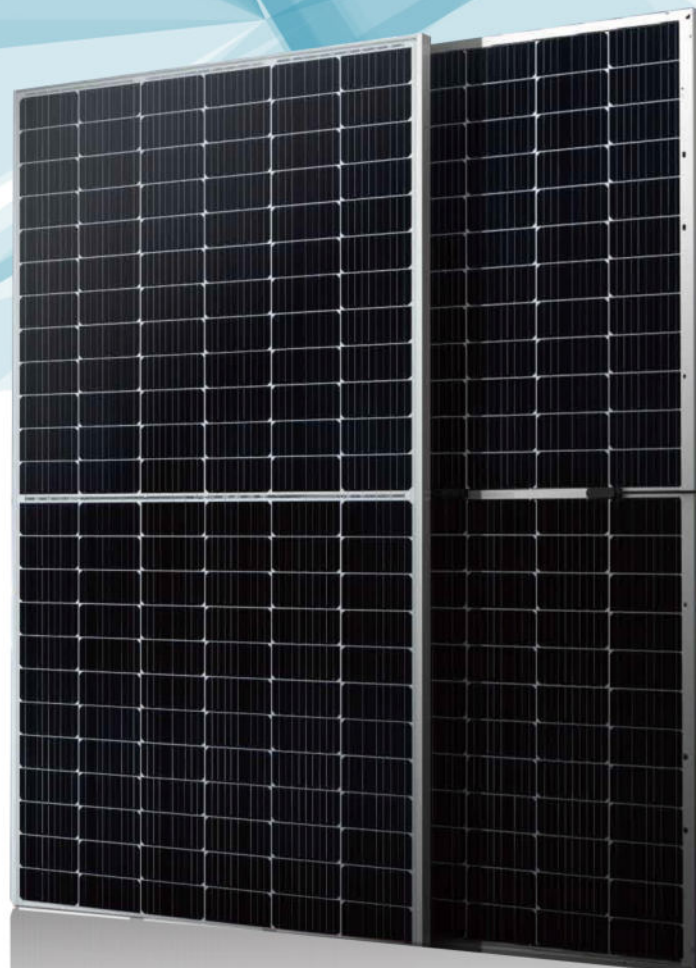
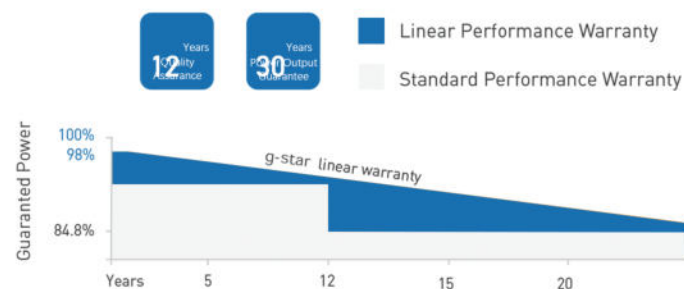
Bifacial  
10BB Half-cut Mono Perc

### SYSTEM & PRODUCT CERTIFICATES

- IEC 61215 / IEC 61730 / UL 61730
- ISO 9001: 2015 Quality Management System
- ISO 14001: 2015 Environment Management System
- ISO 45001: 2018 Occupational Health and Safety Management Systems



### PERFORMANCE WARRANTY



### KEY FEATURES



#### 10BB Half-cut Cell Technology

New circuit design, lower internal current, lower  $R_s$  loss  
Ga doped wafer, attenuation  $< 2\%$  (1st year) /  $\leq 0.45\%$  (Linear)



#### Industry Leading High Yield

Bifacial PERC cell technology,  
5%-25% more yield depends on different conditions



#### Excellent Anti-PID Performance

2 times of industry standard Anti-PID test



#### Wider Application

No water-permeability and high wear-resistance,  
can be widely used in high-humid, windy and dusty area



#### IP68 Junction Box

High waterproof level

# Electrical Characteristics

Testing Condition	STC	NMOT	STC	NMOT	STC	NMOT	STC	NMOT	STC	NMOT
Maximum Power(Pmax/W)	485	362	490	365	495	369	500	372	505	376
Operating Voltage (Vmpp/V)	37.87	35.3	38.02	35.5	38.17	356	38.32	35.7	38.47	35.9
Operating Current (Impp/A]	12.81	10.23	12.89	10.29	12.97	10.36	13.05	10.42	13.13	10.49
Open-Circuit Voltage (Voc/V)	45.16	42.5	45.31	42.6	45.46	42.8	45.61	42.9	45.76	43.1
Short-Circuit Current (Isc/A)	13.70	11.04	13.78	11.11	13.86	11.17	13.94	11.24	14.02	11.30
Module Efficiency(%)	20.40		20.60		20.80		21.00		21.20	

# Mechanical Characteristucs

Pmax gain	5%	10%	15%	20%	25%
Pmax/W	515	539	564	588	613
Vmpp/V	38.02	38.02	38.02	38.02	38.02
Impp/A	13.53	14.18	14.82	15.47	16.11
VocV	45.311	45.31	45.31	45.31	45.31
Isc/A	4.47	15.16	15.85	16.54	17.23

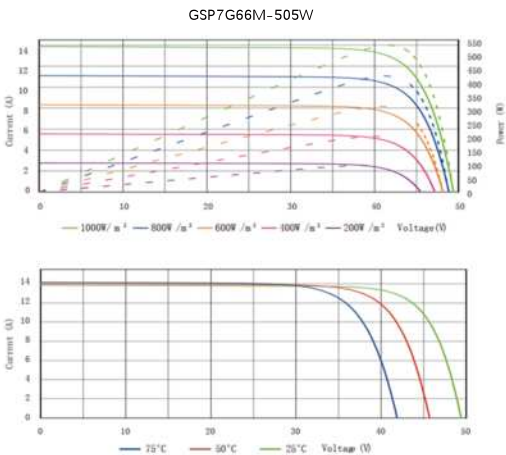
# Mechanical Characteristucs

Temperature Coefficient of Pmax	-0.35%/° C
Temperature Coefficient of Voc	-0.26%/° C
Temperature Coefficient of Isc	+0.048%/° C
Nominal Module OperatingTemperature(NMOT]	43±2° C

# Application Conditions

Cell Type	Monocrystalline Silicon (10Busbar)
No. of Cells	132pcs in series (6*22)
Module Dimensions	2094*1134*35mm (82.44*44.65*1.38inches)
Weight	28kg(61.73lbs.)
Glass	3.2mm AR Coating Tempered Glass
Frame	Anodized Aluminium Alloy
Junction Box	IP68, 3 Bypass Diodes
Output Cables	4mm <sup>2</sup> (IEC), 12AWG(UL)300mm in Length or Customized Length
Connectors	MC4/MC4-EV02

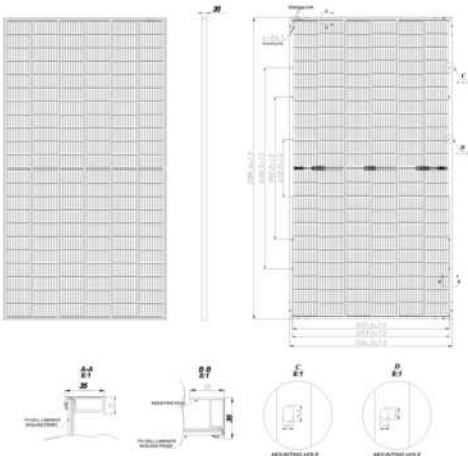
# I-V Curve



# Temperature Characteristics

Maximun System Voltage	1500V/DC
Operating Temperature	-40° C+85°
Maximun Series Fuse	30A
Safety Protection Class	ClassII
Mechanical Load	Front side 5400Pa Back side 2400Pa
Refer. Bifaciality Factor	70%±5%

# Technical Drawings



The specification and key features described in this datasheet may deviate slightly and are not guaranteed. Due to ongoing innovation, R&D enhancement, AG. reserves the right to make any adjustment to the information described herein at any time without notice. Please always obtain the most recent version of the datasheet which shall be duly incorporated into the binding contract made by the parties governing all transactions related to the purchase and sale of the products described herein.